

MODEL T3A-B

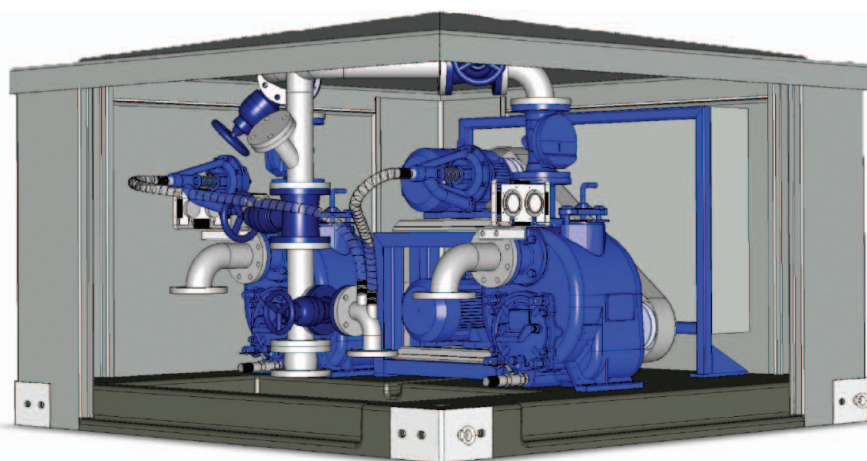
200 X 200 CM



FIBERGLASS ENCLOSURE

- Overall L x W x H : 2105x2105x1430mm
- Enclosure : Composite Honeycomb Sandwich Panels
- Base : Concrete covered with Polyester
- Removable Hinged Doors (External Safety Lock on two Doors)
- Removable Roof and Corners
- Four Lifting Eye Bolts
- Openings through the Base and Central Gutter for Electric Cables
- Large Groutable Opening in the Base for Pipes and Plumbing Accessories
- Ground Anchoring Provisions in the Base, for M20 Anchor Stems
- Forced Air Ventilation System
- External Gelcoat, Grey Colour RAL 7047
- Total Weight : approx. 2200 kg
- Options :
 - Soundproof Insulation
 - Brick or Stone Facings on the Doors and Corners

CUTAWAY



Specifications and illustrations are subject to change without notice / © Copyright by Gorman-Rupp Europe 2015.

SELF PRIMING PUMP T3A-B

ES



Quantity: 2

Size: 3"x3" DN80 DIN Flanges

Maximum Capacity: 100 m³/h

Maximum Head: 34 m

Maximum Self Priming Lift: -7,6 m

Maximum Solids: 63 mm

Model available in Different Materials: T3A3S-B /FM, T3A60S-B /FM, T3A61S-B /FM, T3A71S-B /FM and T3A65S-B /FM. Refer to The Gorman-Rupp Specification sheet for details on the available pumps.

JAN 2015 GRE

DRIVING SYSTEM

V-belt Transmission: 2 x IEC Electrical Motors, IP55, 50 Hz, Efficiency Class IE2

Safety Transmission Guards

PUMP EQUIPMENT

- 2 x Air Release Valve Gorman-Rupp GRP 33-07 with Isolation Ball Valve and Transparent Hose
- 2 x Pump Casing High Temperature Shutdown Kit
- 2 x Suction and Discharge Pressure Gauge, mounted on a Non-Vibrating Support
- 2 x Pump Casing Drainage System, with Isolation Ball Valve and Transparent Hose

PIPINGS AND PIPING ACCESSORIES

> All Flanges are DIN PN10

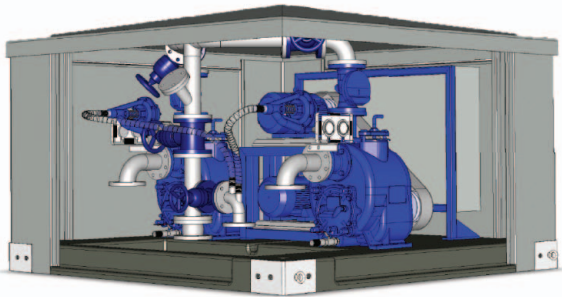
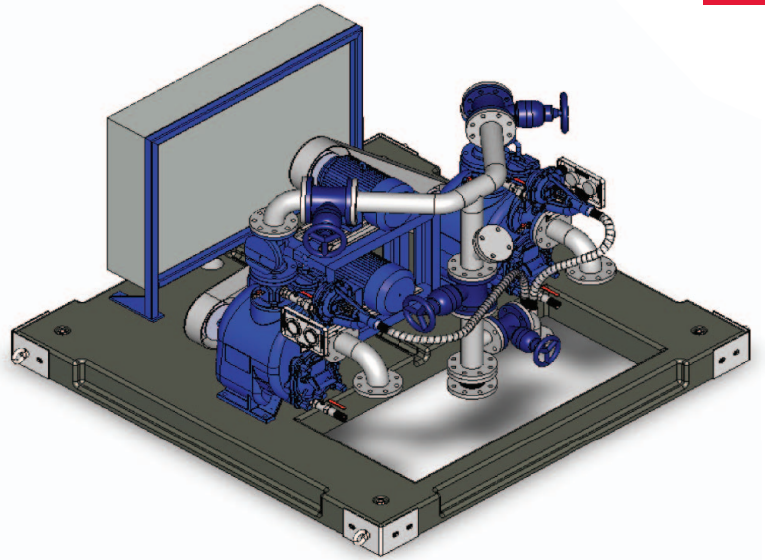
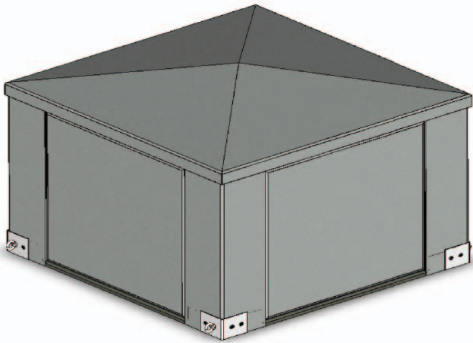
- 2 x Suction Pipe in Stainless Steel 304, DN80 Flanged
- 1 x Common Discharge Pipe in Stainless Steel 304 ended by an Expansion Joint, DN80 Flanged
- 2 x Non-Return Valve, DN80 Flanged
- 3 x Eccentric Plug Valve, DN80 Flanged
- 1 x Access Cover on the Discharge Pipe, DN50 Flanged
- 1 x By-Pass Pipe in Stainless Steel 304 on the Discharge Pipe with Eccentric Plug Valve, DN50 Flanged

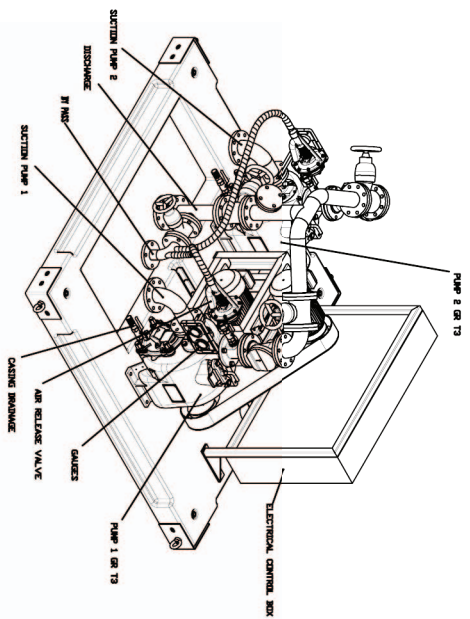
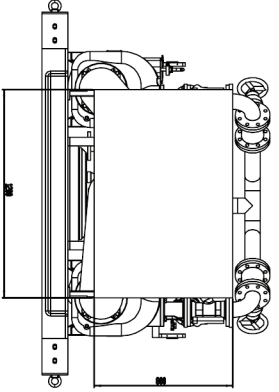
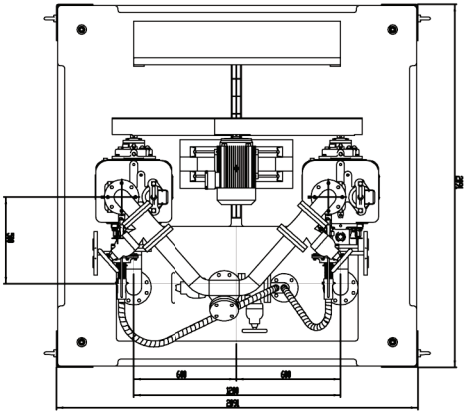
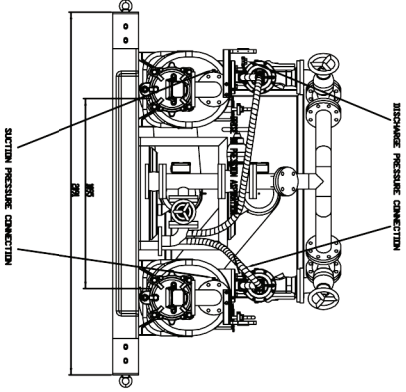
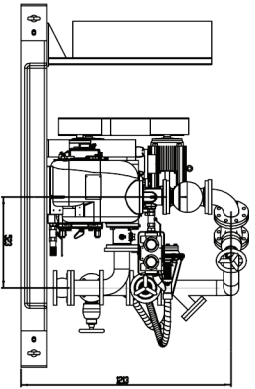
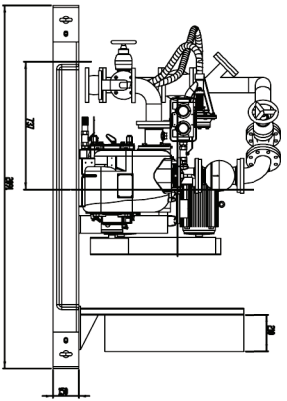
OTHER INTERNAL EQUIPMENT


- 1 x Electrical Heating Element 750W / 1x230V with Adjustable Thermostat
- 1 x Extraction Fan (325m³/h)
- 1 x Electrical Plug CEE 2P+T 230V 16A
- 1 x Internal Lighting

ELECTRICAL BOX WITH AUTOMATIC LEVEL CONTROL (AVAILABLE AS AN OPTION)

MODEL T3A-B






GERMAN-RUPP ENGINE
 Pumps and Motors
 8322 Afdeling 2500
 The Netherlands
 Tel. +31 598 12 37 74
 Fax. +31 598 13 83 57

Above Ground Lift Station
 Type 200x200
 2 x Pump Gorman-Rupp T3A-B/FM